



**THE  
REAL DEAL ON STEEL**

## STEEL IS 100-YEARS STRONG

The real deal on today's steel pipe is that you can expect a 100-year service life when the correct coatings and applications are combined. The fact is that since the late 1890s, CSP has been a vital and trusted part of the engineering landscape. And now some of the added qualities of steel pipe are becoming more valuable, such as how green it is and life cycle predictability, proving that extended service life and flexibility can be summed in one word: **steel**.

CSP has proven its durability when it is correctly specified. Our *Corrugated Steel Pipe Design Manual* and online Answer Desk will assist you on when and how to specify steel for optimum service life expectancy, given your project's environmental condition and load requirements. ([www.theRealDealOnSteel.com](http://www.theRealDealOnSteel.com))

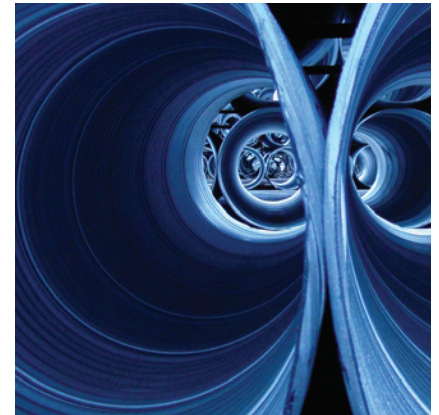
Steel goes deeper and steeper than other solutions, holds up during rugged installation, and today's coatings can withstand all the erosive elements nature can throw at it. The real deal is that nothing is tougher than steel.

## STEEL IS RELIABLE

In concert with the proven service life of steel, the truth is that CSP also offers a *highly predictable* life cycle. For normal environmental conditions, aluminized and polymer-coated CSP offer a service life of 100+ years, making it the right solution. The real deal is that whatever service life the project demands, steel pipe meets it. And while service life can be calculated with basic site information, NCSPA members and our comprehensive design manual are also there to provide additional technical guidance when needed—now that's confidence you can count on.

## GOOD FOR 100+ YEARS

Field evaluations of aluminized and polymer-coated CSP have proven that when installed at sites with normal environmental conditions, aluminized and polymer coatings can provide service in excess of 100 years.



# STEEL: PROVEN 100-YEARS STRONG

By the time you finish reading this, the world will have changed. An old concept may have gained new traction, or a product will be poised to take the world by storm. And so it is with corrugated steel pipe (CSP). New solutions, fueled by rapidly expanding technology and the industry's advancements, have made steel more reliable and greener than ever.

If all you've heard about CSP is from other sources, it's time you knew the real deal on steel. By specifying CSP, you'll be better armed to keep pace with our rapidly changing world and do it with confidence. That's the real deal.

## STEEL IS COST-EFFECTIVE

With the nation's infrastructure in dire need of repair and improvement, steel pipe is the cost-effective choice of engineers, owners and specifiers across the country. The real deal is that the economies of steel and its availability throughout the country make it the most efficient and economical solution.

Steel also delivers on your compressed schedule because it can move as fast as you do.

The economy of steel is strong because it:

- Is the most economical pipe materials solution for both initial costs and total life cycle costs
- Requires less labor and machinery to install
- Is easier and more economical to ship and handle
- Holds up to the most demanding installation conditions

## STEEL IS GREEN

With as much as 83 percent recycled content, steel is the greenest choice on the market. The green on steel extends to the fact it requires less energy and materials to produce than other solutions – by far. And our industry recycles more each year than all the other industry materials combined.

Because the science of metallurgy is so well-known and controlled, the integrity of recycled steel is maintained – there's no drop off in grade or performance in the new, recycled material. Steel's carbon footprint makes less of an impact on the job site as well, earning you more Leadership in Energy and Environmental Design (LEED) certification points.

**Contractors:** CSP provides the lowest installed cost compared to other materials. Low up-front material costs, reduced installations costs, fewer joints and easier positive connection add up to a cost advantage. CSP can help save time and money while increasing productivity.



# 100% TRACEABLE QUALITY

The real deal is that quality assurance for CSP starts where others leave off. All of the properties and elements that make up each and every piece of CSP can be traced back to the production of the raw steel. That means you can count on the integrity and quality of steel to live up to your specific location, application and today's demanding schedules.

CSP conforms to and is routinely certified for compliance to the specifications of the American Association of State Highway and Transportation Officials (AASHTO) and the American Society for Testing and Materials (ASTM). With all the advantages of a high recycle content, 100 percent traceability and the support of the National Corrugated Steel Pipe Association (NCSPA), steel is the quality choice, start to finish.

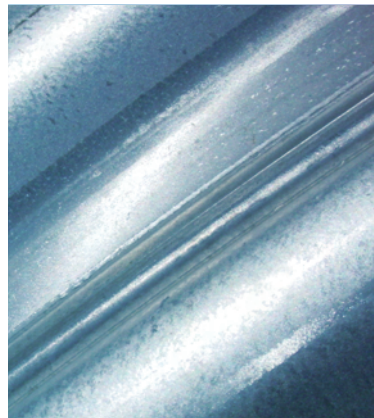
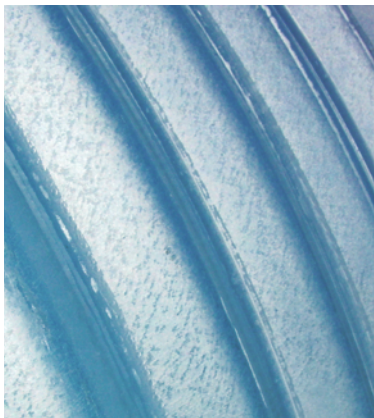
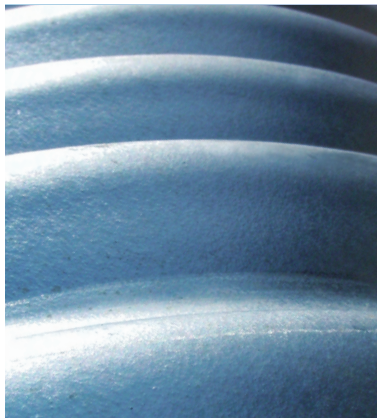
**Specifiers:** NCSPA offers specifying resources to answer all your specification questions. Our *Corrugated Steel Pipe Design Manual*, personalized local attention, and NCSPA website will help ensure you spec it correctly.



# STRONG AS STEEL

Steel has an incredible reputation when it comes to strength. Its greatest strength becomes more apparent when it is actually placed in the ground, and CSP structures can handle fill heights in excess of 100 feet.

Better still, all this strength comes with flexibility. Other products are too brittle or rigid to accommodate for the realities of the job. Additionally, CSP's beam strength allows for the manufacture of longer lengths than any other pipe material. Adding to your peace of mind is the fact that the material properties of steel's strength are established at the mill and the finished product is fabricated to exacting specifications. The real deal is that with steel, you're getting the strength you expect.



## INNOVATE WITH VERSATILITY

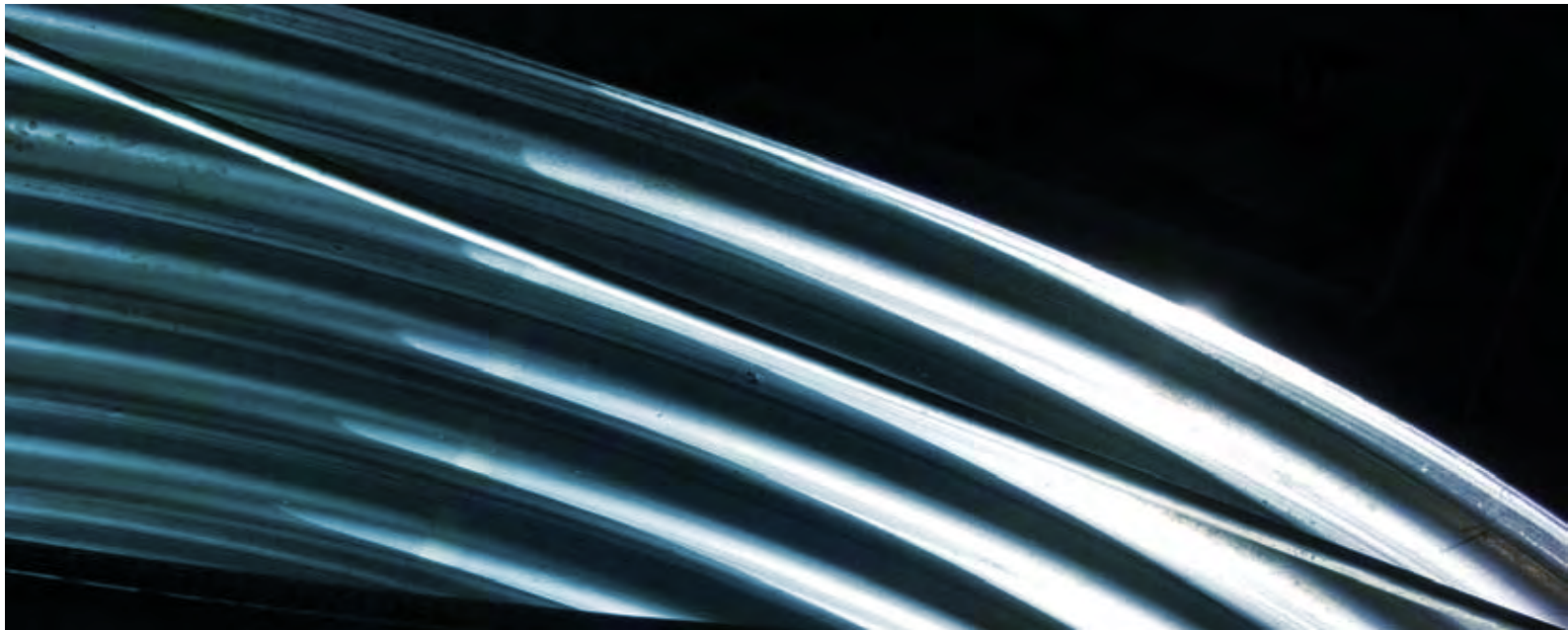
As the communities we serve age and expand, the demands placed on the construction industry expand with them. Innovation becomes critical. CSP uniquely empowers your designs with unique and flexible options - drainage and non-drainage systems bend to your will. You command diameters from six inches to 15 feet. You can span over 80 feet. You determine shapes and sizes, coatings and life cycles.

The real deal on steel is that you can innovate with creativity. Only steel pipe combines this breadth of choice and the technical support you need to exceed the demands of today's project needs.

**Engineers:** 100+ year service life is attainable with aluminized and polymer coatings, among others. CSP coatings can meet any service life requirement, and the life cycle can be accurately determined on any CSP product.



To get the facts on the service life and flexibility of today's CSP and more, visit [www.RealDealOnSteel.com](http://www.RealDealOnSteel.com).



National Corrugated Steel Pipe Association  
14070 Proton Road, Suite 100 LB 9  
Dallas, TX 75244

P 972.850.1907

F 972.490.4219

[www.RealDealOnSteel.com](http://www.RealDealOnSteel.com)



STEEL. PROVEN 100-YEARS STRONG

