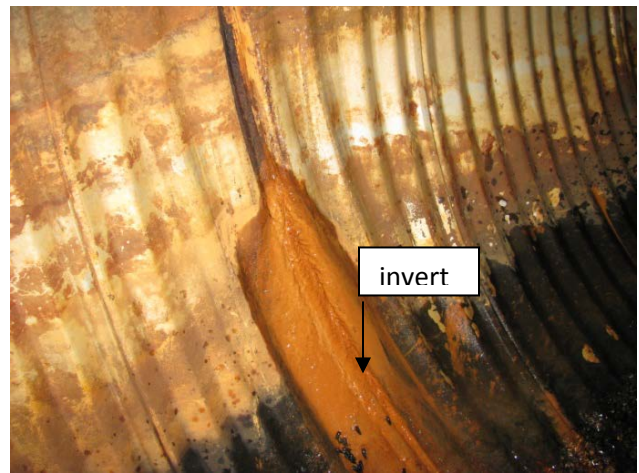
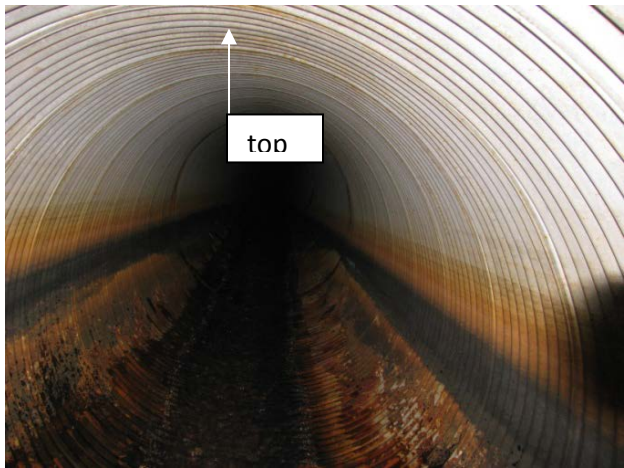


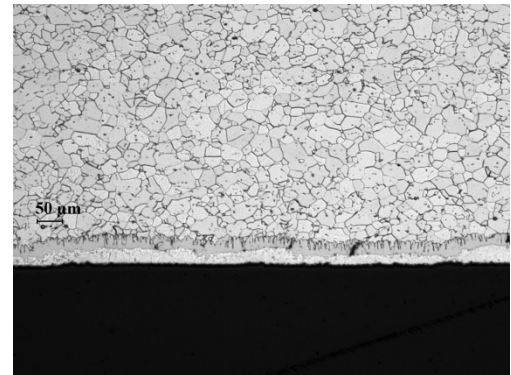
Cottage Grove (Anlauf), Oregon

DIAMETER	GAGE	YEAR INSTALLED	INSPECTION DATE
66"	12 (0.109 IN)	ESTIMATED AT 1993	MAY, 2013
PROFILE	COATING	SOIL DATA	WATER DATA
2 2/3 X 1/2	ALUMINIZED TYPE 2	PH: N/A	PH: 5.0
		RESISTIVITY: 2,860 Ω-CM	RESISTIVITY: 10,870 Ω-CM
			FHWA ABRASION LEVEL:
			CHLORIDES: <1
			CaCO ₃ : 40 - 80 PPM

IMAGES:



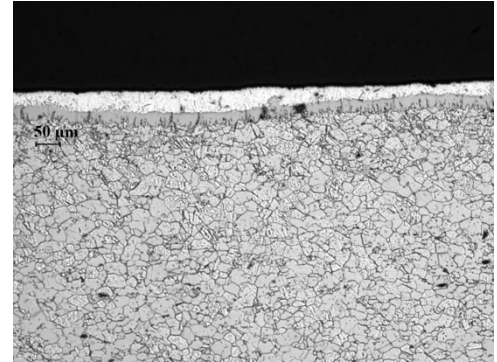
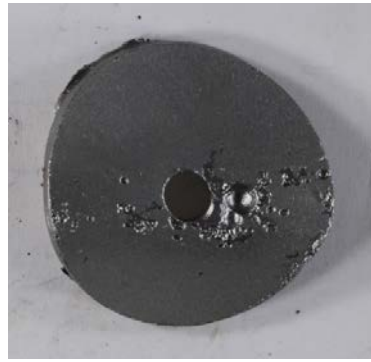
SOIL SIDE ALUMINUM COATING DATA:



- Surface area coated: 100%
- Minimum thickness: 0.00 mils
- Maximum thickness: 1.87 mils (47.5μm)
- Maximum pit depth: 1.60 mils

Cottage Grove (Anlauf), Oregon

WATER SIDE ALUMINUM COATING DATA:



- Surface area coated: 90%
 - Minimum thickness: 0.00 mils
 - Maximum thickness: 2.19 mils (55.5 μ m)
 - Maximum pit depth: 11.00 mils
- *Note: largest visible pit is a result of the removal process

ULTRA-SONIC PIPE THICKNESS (IN):

- TOP: AVG = 0.104 (0.104, 0.104, 0.103, 0.103, 0.105)
 - INVERT: AVG = 0.106 (0.106, 0.107, 0.108, 0.105, 0.102)
- *Measured using TI-25M Ultrasonic Wall Thickness Gauge

COATING THICKNESS COMPARISON (microns):

- TOP: 41
 - INVERT: 37
- *Avg of a minimum of 4 readings after cleaning

COMMENTS:

- Black scaling on the invert
- This is long run of pipe (a few hundred feet) under high fill