

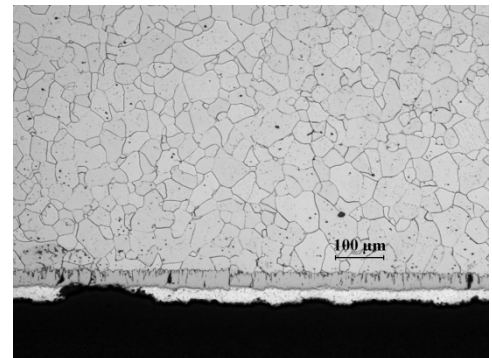
## Dickinson County, KS

DIAMETER	GAGE	YEAR INSTALLED	INSPECTION DATE
36" - RIVETED	12 (0.109 IN)	ESTIMATED AT 1953	MAY, 2013
PROFILE	COATING	SOIL DATA	WATER DATA
2 2/3 X 1/2	ALUMINIZED TYPE 2	PH: 7.1	PH: N/A
		RESISTIVITY: 1,640 Ω-CM	RESISTIVITY: N/A
			FHWA ABRASION LEVEL: 2
			CHLORIDES: DRY
			CaCO <sub>3</sub> : DRY

### IMAGES:



### SOIL SIDE ALUMINUM COATING DATA:



- Surface area coated: 5%
- Minimum thickness: 0.00 mils
- Maximum thickness: 0.00 mils
- Maximum pit depth: 0.73 mils

## *Dickinson County, KS*

### WATER SIDE ALUMINUM COATING DATA:



- Surface area coated: 0%
- Minimum thickness: 0.00 mils
- Maximum thickness: 0.00 mils
- Maximum pit depth: 37.00 mils

### ULTRA-SONIC PIPE THICKNESS (IN):

- TOP: AVG = 0.107
- INVERT: AVG = 0.122
- 4 o'clock AVG = 0.111

\* Avg of a minimum of 4 readings after cleaning measured using TI-25M Ultrasonic Wall Thickness Gauge

### COATING THICKNESS COMPARISON (microns):

- TOP: 45
- INVERT: 16

\*Avg of a minimum of 4 readings after cleaning

### COMMENTS:

- Scaling at the invert could be cause for increase in thickness measurements
- Pipe is in good condition
- No further corrosion of previous trepan holes