

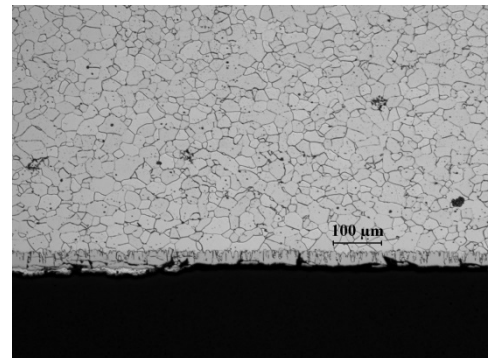
Marshall County #5, Iowa

DIAMETER	GAGE	YEAR INSTALLED	INSPECTION DATE
36" - RIVETED	12 (0.109 IN)	ESTIMATED AT 1953	MAY, 2013
PROFILE	COATING	SOIL DATA	WATER DATA
2 2/3 X 1/2	ALUMINIZED TYPE 2	PH: 7.6	PH: N/A
		RESISTIVITY: 1,570 Ω-CM	RESISTIVITY: N/A
			FHWA ABRASION LEVEL: 2
			CHLORIDES: DRY
			CaCO ₃ : DRY

IMAGES:



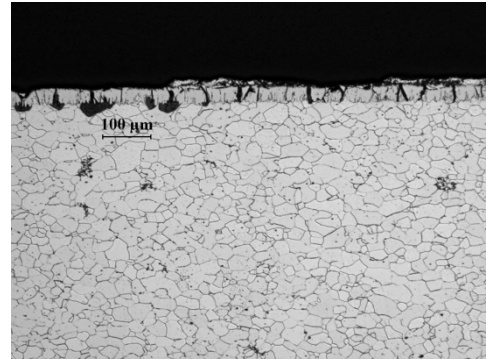
SOIL SIDE ALUMINUM COATING DATA:



- Surface area coated: 20%
- Minimum thickness: 0.00 mils
- Maximum thickness: 1.40 mils (35.5 μm)
- Maximum pit depth: 1.31 mils

Marshall County #5, Iowa

WATER SIDE ALUMINUM COATING DATA:



- Surface area coated: 40%
- Minimum thickness: 0.00 mils
- Maximum thickness: 0.89 mils (22.5 μm)
- Maximum pit depth: 2.57 mils

ULTRA-SONIC PIPE THICKNESS (IN):

- TOP: AVG = 0.109
- INVERT: AVG = 0.111

* Avg of a minimum of 4 readings after cleaning measured using TI-25M Ultrasonic Wall Thickness Gauge

COATING THICKNESS COMPARISON (microns):

- TOP: 41
- INVERT: 24

*Avg of a minimum of 4 readings after cleaning

COMMENTS:

- Pipe in good condition
- No pavement distress
- No further corrosion of previous trepan holes