

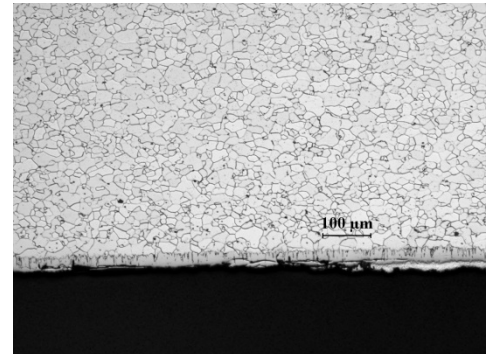
Pratt County, Kansas

DIAMETER	GAGE	YEAR INSTALLED	INSPECTION DATE
36" - RIVETED	14 (0.079 IN)	ESTIMATED AT 1953	MAY, 2013
PROFILE	COATING	SOIL DATA	WATER DATA
2 2/3 X 1/2	ALUMINIZED TYPE 2	PH: 7	PH: N/A
		RESISTIVITY: 3,290 Ω -CM	RESISTIVITY: N/A
			FHWA ABRASION LEVEL: 2
			CHLORIDES: DRY
			CaCO ₃ : DRY

IMAGES:



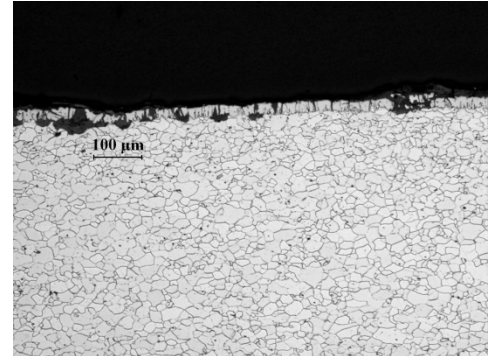
SOIL SIDE ALUMINUM COATING DATA:



- Surface area coated: 5%
- Minimum thickness: 0.00 mils
- Maximum thickness: 0.00 mils
- Maximum pit depth: 14.00 mils

Pratt County, Kansas

WATER SIDE ALUMINUM COATING DATA:



- Surface area coated: 5%
- Minimum thickness: 0.00 mils
- Maximum thickness: 0.00 mils
- Maximum pit depth: 12.00 mils

ULTRA-SONIC PIPE THICKNESS (IN):

- TOP: AVG = 0.081
- INVERT: AVG = 0.080

* Avg of a minimum of 4 readings after cleaning measured using TI-25M Ultrasonic Wall Thickness Gauge

COATING THICKNESS COMPARISON (microns):

- TOP: 41
- INVERT: 20

*Avg of a minimum of 4 readings after cleaning

COMMENTS:

- Pipe is in good condition
- No further corrosion of previous trepan holes