

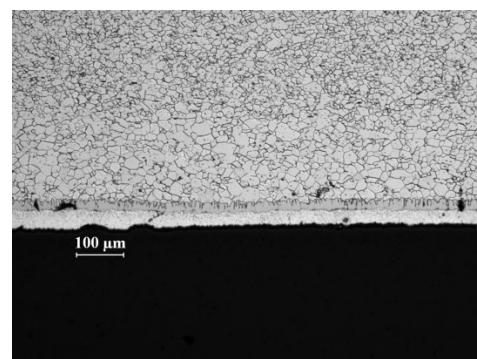
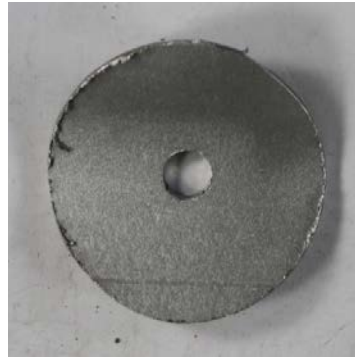
Santiam Highway 38+12, Oregon

DIAMETER	GAGE	YEAR INSTALLED	INSPECTION DATE
54"	14 (0.079 IN)	ESTIMATED AT 1985	MAY, 2013
PROFILE	COATING	SOIL DATA	WATER DATA
2 2/3 X 1/2	ALUMINIZED TYPE 2	PH: N/A	PH: 5.0
		RESISTIVITY: 9,440 Ω-CM	RESISTIVITY: 23,810 Ω-CM
			FHWA ABRASION LEVEL: 2
			CHLORIDES: <2
			CaCO ₃ : <40 PPM

IMAGES:



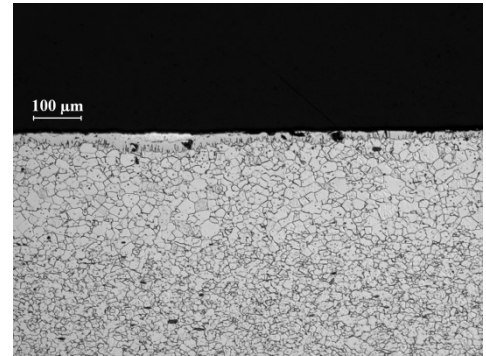
SOIL SIDE ALUMINUM COATING DATA:



- Surface area coated: 100%
- Minimum thickness: 0.55 mils
- Maximum thickness: 2.28 mils (58 μm)
- Maximum pit depth: 1.35 mils

Santiam Highway 38+12, Oregon

WATER SIDE ALUMINUM COATING DATA:



- Surface area coated: 65%
- Minimum thickness: 0.00 mils
- Maximum thickness: 1.72 mils (43.5 μ m)
- Maximum pit depth: 4.97 mils

ULTRA-SONIC PIPE THICKNESS (IN):

- TOP: AVG = 0.067 (0.067, 0.066, 0.069, 0.067, 0.066)
- INVERT: AVG = 0.069 (0.069, 0.073, 0.068, 0.067, 0.068)

*Measured using TI-25M Ultrasonic Wall Thickness Gauge

COATING THICKNESS COMPARISON (microns):

- TOP: 46.5
- INVERT: 31

*Avg of a minimum of 4 readings after cleaning

COMMENTS:

- This is a twin pipe barrel installation
- Data collected from the west side where abrasion appeared to be more severe